

07 20 T Fr Franna AT20 Main Boom Fall Block Chart

Met		Full Power Boom - Manual Retracted									
LMI Duty 01		Boom Head Dimen		0.6		Out		F			
Boom Pivot From Ground, Meters		2.9		Boom Foot Pin offset		1.8		F- lb		0.4536	
C/L rotation - chassis extr, Meters		1		Jib offsett Angle				F- l		0.3048	

A	Main Boom Length in Meters																		
	1	2	3	4	5	6	7	8	9	10	11	12	13	14	15	16	17	18	
Mass	20000	20000	20000	20000	20000	20000	20000	20000	20000	20000	20000	20000	20000	20000	20000	20000	20000	20000	20000
Radius in Meters	5.7	6.0	6.5	7.0	7.5	8.0	8.5	9.0	9.5	10.0	10.5	11.0	11.5	12.0	12.5	13.0	13.5	13.9	
1.5	16800	16250	15450	14900															
2.0	16800	16800	16500	15700	15100	14700	14350												
2.5	13900	13900	13900	13850	13850	13850	13850	13200	13000										
3.0	11450	11450	11450	11400	11400	11400	11400	11400	11400	11150	10250								
3.5	9650	9650	9650	9650	9650	9650	9650	9650	9650	9650	9500	8150	7500						
4.0	9450	8550	8350	8350	8350	8350	8350	8350	8300	8300	8300	7600	7000	6700	6450				
4.5			7500	7300	7300	7300	7300	7300	7300	7300	7300	7150	6550	6250	6050	5800	5650		
5.0				6650	6500	6500	6500	6500	6500	6500	6500	6500	6150	5900	5650	5450	5300	5150	
6.0					5950	5350	5250	5250	5250	5250	5250	5250	5250	5250	5050	4350	4100	3950	
7.0							4850	4450	4400	4400	4400	4400	4400	4350	4350	4350	4200	3950	
8.0									4100	3750	3700	3700	3700	3700	3700	3700	3700	3600	
9.0											3500	3250	3200	3200	3200	3200	3200	3200	
10.0													3000	2800	2800	2800	2800	2800	
11.0															2650	2500	2450	2450	
11.75																	2350	2250	

07 20 T Franna AT - 20 T Lug		20t Fixed Lug - Manual Extention Retracted	
Met	LMI Duty 09	Boom Head Dimen	0.6
Boom Pivot From Ground Meters	2.9	Boom Foot Pin offset	1.8
C/L rotation - chassis extr. Meters	1	Jib offset Angle	
		F- jib	
		Jib L	
		Out	F
		F- lb	0.4536
		F- l	0.3048

B	1
Mass	20000
Radius in Meters	3.3
0.8	20000
1.09	20000
1.23	20000
1.26	20000

07 20 T Fr Franna AT - 20 T Inner Lug		Inner Lug - Manual Ext retracted	
Met	LMI Duty 10	Boom Head Dimen	0.6
		Boom Foot Pin offset	1.8
		Jib offset Angle	
Boom Pivot From Ground Meters	2.9	F- jib	
C/L rotation - chassis extr. Meters	1	Jib L	
		Out	F
		F- lb	0.4536
		F- l	0.3048

C	1	2	3	4	5	6	7	8	9
	20000	20000	20000	20000	20000	20000	20000	20000	20000
Mass									
Radius in Meters									
	4.1	4.4	5.0	5.5	6.0	6.5	7.0	7.5	8.3
1.4	20000	20000	20000	19300	18100	17200			
1.7	19000	19000	19000	18700	17600	16500	15600	15000	
2.0	16950	16900	16800	16700	16650	16000	14650	14100	
2.5			13150	13100	13050	12950	12900	12750	11350
3.0				10700	10650	10600	10550	10500	10450
3.5					8900	8850	8800	8800	8750
4.0						7550	7550	7500	7450
4.5							6550	6500	6450
5.0								5700	5650
5.5									5000
6.0									4450

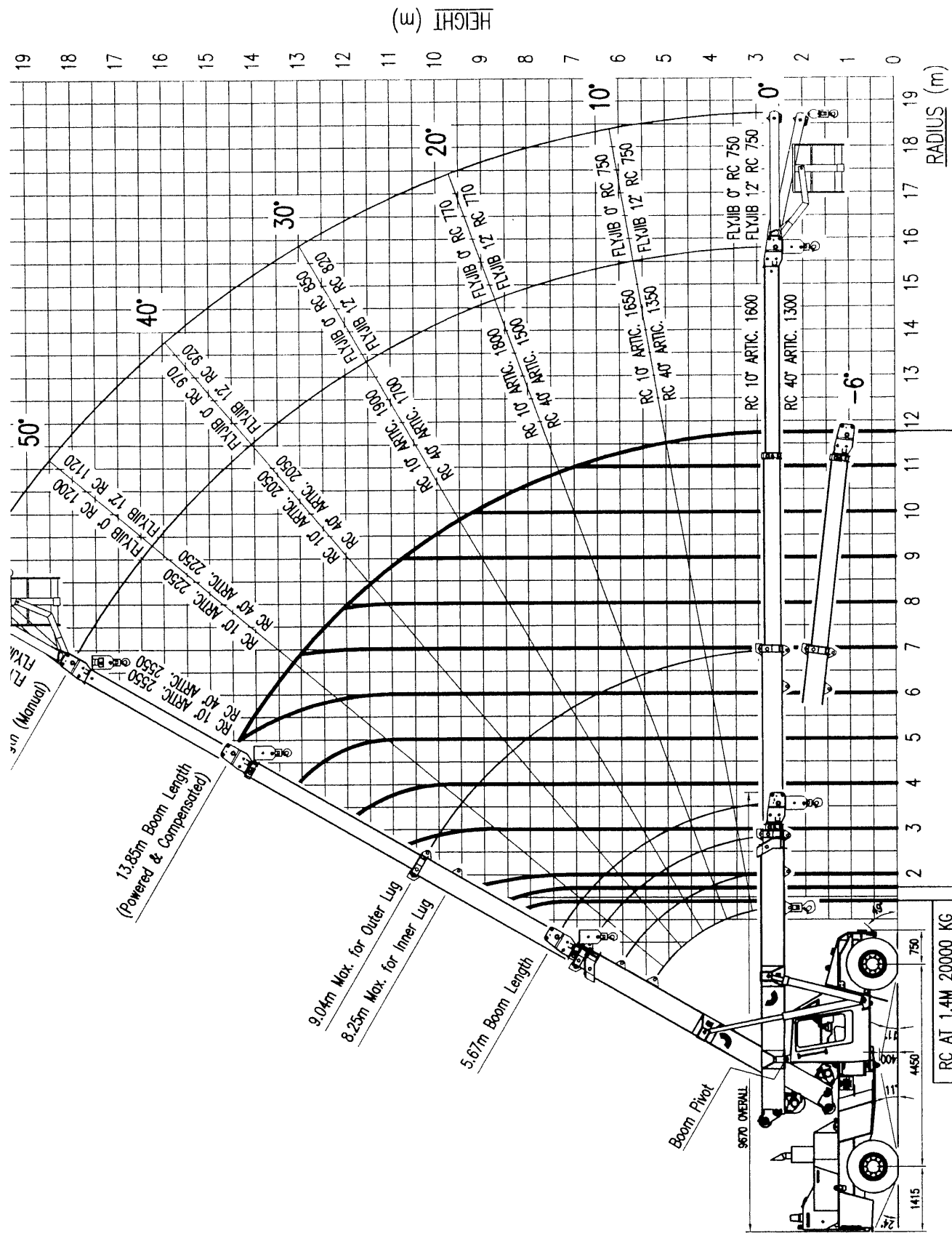
07 20 T Fr		Franna AT - 20 T Outer Lug	
Met	LMI Duty 11	Outer Lug - Manual retracted	
Boom Pivot From Ground Meters		2.9	
C/L rotation - chassis extr. Meters		1	
		0.6	F
		1.3	0.4536
			0.3048

D	Main Boom Length In Meters								
	1	2	3	4	5	6	7	8	9
Mass	20000	20000	20000	20000	20000	20000	20000	20000	20000
Radius in Meters	4.2	4.5	5.0	5.5	6.0	6.5	7.0	7.5	8.25
1.4	20000	20000	20000	19900					
1.7	19000	19000	19000	18850	17400	15650			
2.0	17400	17300	17150	17050	16350	14700	13400		
2.5	13700	13600	13500	13400	13300	13250	12350	11150	10150
3.0			11050	11000	10900	10850	10750	10300	9350
3.5			9300	9250	9150	9100	9050	9000	8650
4.0				7900	7850	7800	7750	7700	7650
4.5					6850	6800	6750	6700	6650
5.0						6000	5950	5900	5850
5.5							5250	5200	
6.0								4700	4650
6.5									4200

07 20 T Fr Franna AT - 20 T Boom Full Ext, Manual Ext, LESS than 10'		Full Boom - Manual Extension Extended	
Met	LMI Duty 03	Boom Head Dimen	0.6
Boom Pivot From Ground Meters	2.9	Boom Foot Pin offset	1.8
C/L rotation - chassis extr. Meters	1	Jib offset Angle	
		F- jib	
		Jib L	
		Out	F
		F- lb	0.4536
		F- l	0.3048

E	1
Mass	20200
Radius in Meters	17.9
6.7	2550
9.3	2250
11.5	2050
13.3	1900
14.6	1800
15.5	1650
15.8	1600

Main Boom Length in Meters



RC AT 1.4M	20000 KG
RC AT 1.7M	19000KG
RC (KG) 10' ARTIC.	16800/11400
RC (KG) 40' ARTIC.	12600/9950
WINCH RC (KG) 10' ARTIC.	2250
WINCH RC (KG) 40' ARTIC.	1850

WINCH RATED CAPACITY (MAX.)	
SINGLE PART	4200 KG
TWO PARTS	8400 KG
THREE PARTS	12600 KG
FOUR PARTS	16800 KG

NOTE : 1. RC'S AT 1.4 & 1.7M RADIUS ARE FOR LUGS ONLY. OTHER RC'S ARE FOR WINCH ONLY. CHECK RATED CAPACITY CHART FOR OTHER LUG VALUES.
 2. RHINO HOOK MAXIMUM RC IS 10000 KG. MANBASKET MAXIMUM RC IS 275 KG.
 3. THIS RADIUS CHART IS A SUMMARY OF RATED CAPACITY MANUAL 16C1320-. REFER TO THE CRANE'S RATED CAPACITY CHART BEFORE ATTEMPTING A LIFT.

