

Total Rated Load (kg)

Outriggers fully extended

Working radius (m)	Boom Length (m)			
	1.85	3.00	4.15	5.30
Less than 1.1	995	995		
1.3	980	980		
1.5	890	890		
1.65	790			
Less than 1.8			820	
2.0		750	750	
Less than 2.4				650
2.5		620	620	620
2.8		550	550	550
3.0			500	500
3.5			380	380
3.95			300	
4.0				300
4.5				250
5.10				200

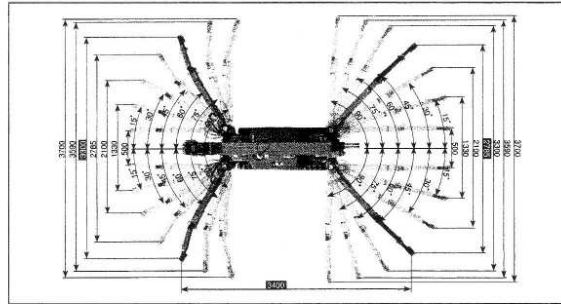
Secondary Outrigger positions

Working radius (m)	Boom Length (m)			
	1.85	3.00	4.15	5.30
Less than 1.1	735	735		
1.3	620	620		
1.5	540	540		
1.65	490			
Less than 1.8			435	
2.0		405	405	
Less than 2.4				295
2.5		280	280	280
2.8		210	210	210
3.0			185	185
3.5			140	140
3.95			110	
4.0				100
4.5				75
5.10				60

☆ Included 15 kg of Hook Weight

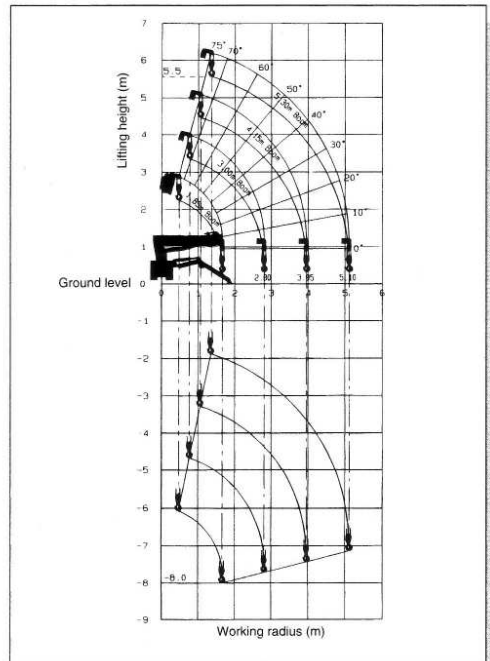
☆ Boom deflections are included

Outriggers' Arrangement



Marked **■** : Outriggers fully extended

Working Range



CAUTION : The working range chart apply to cases without load and do not include boom deflections.

Hook Blocks

No. of fall	Weight	Capacity	Remarks
4 falls	15.0 kg	1.0 ton	STD
2 falls	9.6 kg	0.5 ton	OPT
Single fall	17.4 kg	1.0 ton	OPT

HAWKESBURY

CRANES

PTY. LTD

0418 451 120