

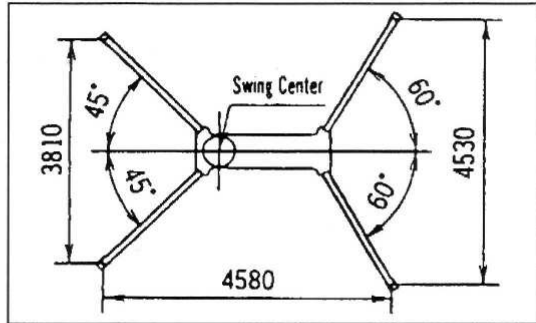
# MAYDA Mini Crawler Crane Series MC285CRM-B

Total Rated Load (kg) \_\_\_\_\_

Outriggers ' Arrangement \_\_\_\_\_

## Outriggers fully extended

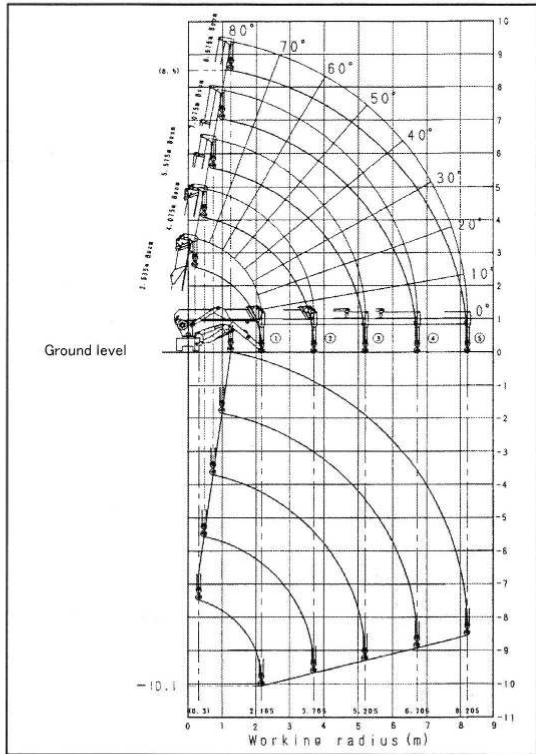
Boom ①、①+②		Boom ①+②+③		Boom ①+②+③+④		Boom ①+②+③+④+⑤	
4.075m boom		5.575m boom		7.075m boom		8.575m boom	
Working Radius (m)	T.Rated Load (kg)	Working Radius (m)	T.Rated Load (kg)	Working Radius (m)	T.Rated Load (kg)	Working Radius (m)	T.Rated Load (kg)
~1.4	2,820	~3.0	1,220	~3.6	820	~4.0	550
1.5	2,520	3.5	970	4.0	740	4.5	400
2.0	1,920	4.0	780	4.5	580	5.0	340
2.5	1,570	4.5	630	5.0	480	5.5	300
3.0	1,220	5.0	530	5.5	430	6.0	270
3.5	970	5.205	530	6.0	380	6.5	230
3.705	920			6.5	350	7.0	200
				6.705	330	7.5	180
						8.0	150
						8.205	150



Working Range \_\_\_\_\_

## Secondary Outriggers positions

Boom ①、①+②		Boom ①+②+③		Boom ①+②+③+④		Boom ①+②+③+④+⑤	
4.075m boom		5.575m boom		7.075m boom		8.575m boom	
Working Radius (m)	T.Rated Load (kg)	Working Radius (m)	T.Rated Load (kg)	Working Radius (m)	T.Rated Load (kg)	Working Radius (m)	T.Rated Load (kg)
~1.4	1,720	~3.0	510	~3.6	400	~4.0	330
1.5	1,720	3.5	410	4.0	330	4.5	280
2.0	1,070	4.0	330	4.5	280	5.0	230
2.5	630	4.5	280	5.0	230	5.5	180
3.0	520	5.0	230	5.5	180	6.0	160
3.5	430	5.205	200	6.0	160	6.5	150
3.705	350			6.5	150	7.0	100
				6.705	140	7.5	80
						8.0	70
						8.205	60



☆Including 20 Kg hook weight

☆Boom deflection is not allowed for

**CAUTION:** The working range chart applies to cases without load and do not include boom deflections.

**HAWKESBURY**  
**CRANES** PTY. LTD  
**0418 451 120**