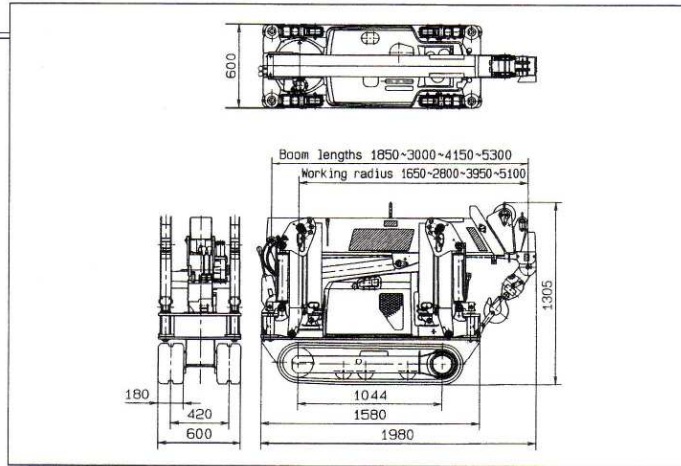


MAEDA NEOX Series

MC-104CR

General view



Specification

Model	MC-104CR	Traction system	Drive	Hydrostatic type, Stepless forward and reverse
Crane capacity	995 kg × 1.10 m	Travel speed		0 ~ 2.4 km/h
Max. working radius	5.10 m	Gradability		20°
Max. lifting height	Approx. 5.5 m	Crawler ground length		1,044 mm
Winch System		Ground pressure		28.4 Kpa (0.29 kg/cm ²)
Hook speed	4.0 m / min (with 3 layers & 4 falls)	Crawler width		180 mm
Rope hoisting speed	16.0 m / min (4 layers)	Engine		
Wire rope	IWRC 6 × Fi (29) ∅ 6 × 39 m	Model	Yanmar "GA300SECMS1"	
Breaking strength	25.1 kN (2,560 kg)	Max.output	5.7 kw (7.8 PS) / 1,800 min ⁻¹ (rpm)	
Single line pull	2.4 kN (245 kg)	Starting method	Both electric start and recoil start are available	
Hoist method	Hydraulic motor driven, worm gear reduction with self-locking	Fuel	Gasoline	
Telescopic system		Fuel tank capacity	6.0 L	
Boom length	1.85 m ~ 5.30 m	Overall length x overall width x overall height	1,980 mm × 600 mm × 1,305 mm	
Telescoping speed	3.45 m / 16 sec	Machine weight	1,050 kg	
Boom type	Automatic power boom (1 cylinder + 2 wires)	Safety system	Overwinding alarm, Load meter, Level gauge, Indication lamp for outriggers' setting, Boom angle indicators with load indicators, Hydraulic safety valve, Automatic worm self-locking for winch, Hook safety latch, Self-locking for slewing & Stopping device at 3 rolls on the drum.	
Telescopic method	4-section hydraulically telescoping boom of pentagonal box construction	Standard Equipment		
Derricking System		A 9 m cable type remote controller	1 set	
Derricking angle / Time	0 ~ 75° / 9 sec	Working light	1 pcs	
Derricking method	Double acting type hydraulic cylinder	Hour-meter	1 pcs	
Slewing System		Optional Equipment	<ul style="list-style-type: none"> — 2 fall hook block — Ball hook — Wireless remote controller — White rubber tracks 	
Slewing angle / Speed	360° (continuous) / 1.6 min ⁻¹ (rpm)			
Slewing method	Hydraulic motor driven, worm gear reduction with self-locking			
Outriggers	Box type × 4 pcs Direct push type hydraulic cylinders with pilot check valves For stabilizing × 4 pcs			

● Due to improvements, the specifications are subject to change without notice.

MAEDA

Total Rated Load (kg)

Outriggers fully extended

Working radius (m)	Boom Length (m)			
	1.85	3.00	4.15	5.30
Less than 1.1	995	995		
1.3	980	980		
1.5	890	890		
1.65	790			
Less than 1.8			820	
2.0		750	750	
Less than 2.4				650
2.5		620	620	620
2.8		550	550	550
3.0			500	500
3.5			380	380
3.95			300	
4.0				300
4.5				250
5.10				200

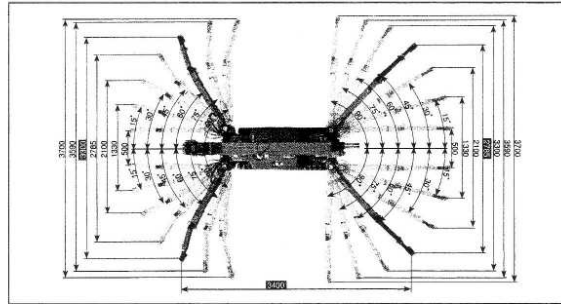
Secondary Outrigger positions

Working radius (m)	Boom Length (m)			
	1.85	3.00	4.15	5.30
Less than 1.1	735	735		
1.3	620	620		
1.5	540	540		
1.65	490			
Less than 1.8			435	
2.0		405	405	
Less than 2.4				295
2.5		280	280	280
2.8		210	210	210
3.0			185	185
3.5			140	140
3.95			110	
4.0				100
4.5				75
5.10				60

☆ Included 15 kg of Hook Weight

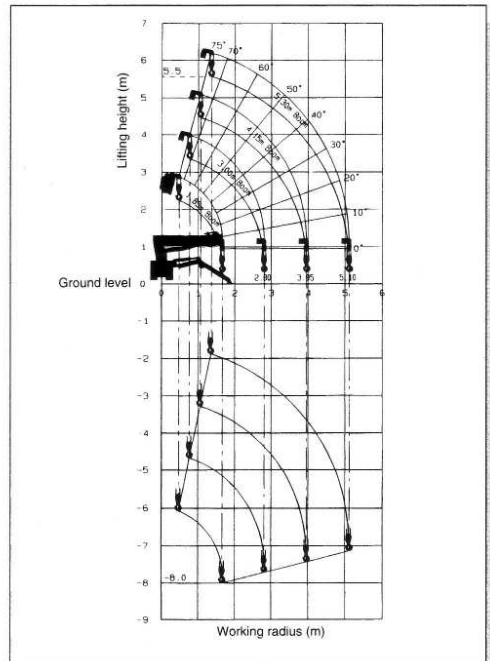
☆ Boom deflections are included

Outriggers' Arrangement



Marked **■** : Outriggers fully extended

Working Range



CAUTION : The working range chart apply to cases without load and do not include boom deflections.

Hook Blocks

No. of fall	Weight	Capacity	Remarks
4 falls	15.0 kg	1.0 ton	STD
2 falls	9.6 kg	0.5 ton	OPT
Single fall	17.4 kg	1.0 ton	OPT

HAWKESBURY
CRANES PTY. LTD

0418 451 120